

2022 ANNUAL REPORT



TE WHARE AWHERO
Hope House

About Us

Te Whare Awhero (Hope House) grew out of Hope Church and has been providing community and social services in Hornby and the Greater Southwest of Christchurch for over 30 years.

We provide affordable counselling, community support and a range of child and family support services, as part of our overarching purpose of bringing hope to our community.



Our Values

Whanau

We are established in the knowledge that we do not stand alone.

Community

We stand with our community.

People

We value people and meet everyone with love where they are at.

Integrity

We bring honesty, openness, professionalism and ethical practice in all that we do.

Chairman's Report

2022 has been a challenging year with covid-19 widespread in our communities as well as a lengthy winter illness season impacting our operations.

This year has seen several personnel changes. At trustee level Jim McClintock stepped down and Heather Agnew and Vicky Reid joined us on the board.

At staff level Ingrid Daff became Team Leader of the Mana Ake programme and immersed herself in Project G. Nicky Ewing joined us in the capacity of Community Support Worker.

The hard mahi continued at TWA – external funding applications, recruitment processes and work on contracts and policies. Behind all this, initiatives were being developed that would contribute to bring hope to our community - further planning towards our proposed Longitudinal Whanau Support programme.

Needless to say, the other arms of TWA continued to look for new opportunities to serve our community.

As trustees it is fitting to pay tribute to Carey's vision, diligence and passion in advancing the vision of TWA. We consider ourselves blessed to have him as director.

Good news for the poor, healing for the broken, peace for those who hurt, freedom for those imprisoned.

Luke 4 : 18-19

It is fitting also to acknowledge the commitment and expertise of the staff in Counselling, Mana Ake, OSCAR, Community Development, Finance and Administration. Without them the work of the Trust would quickly grind to a halt. Thank you also to fellow trustees for their guidance in providing governance of the Trust.

My thanks to God for his providence in 2022.



Colin Price
Chairman

Counselling



Our team of qualified, registered counsellors provide an affordable counselling service to the community, as well as Employee Assistance Programmes and school-based services.

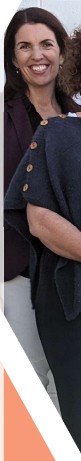
2022 was another year of Covid interruptions but we were able to offer online and phone sessions to continue offering support for clients.

We were able to meet enquiries for counselling support and not have a waitlist, apart from couples. Most of our team generally had a full caseload throughout the year.

So besides Covid, we were still able to provide a community service that is both professional and helpful and caring to those who knock at our doors for support.

Feedback from clients is always positive with people appreciating our service.

We were able to offer some heavily subsidised sessions to those in financial hardship because of our counselling fund that continues to get topped up with the hard work of relentless funding applications and donations.



Jude McLean
Counselling Manager

“ [My daughter’s] problem solving at school has come a long way. She is managing conflict better. [As a concerned parent], this is such a help... having this service and we are very grateful. ”

“ Being able to talk issues through with [my counsellor] and receiving her understanding, compassion, advice, insight & wisdom that has been applicable to my life... really helps me to move on. ”



2452

counselling
sessions provided
by our team
in 2022

\$88,680

for 739 subsidised
children's sessions
provided at three
local schools

\$73,594

in subsidised
counselling sessions
provided to lower
income families



Highlights of the Year

Our two interns, Megan Wilson and Shannon Hayes, both graduated at the end of the year with a Bachelor's Degree in Counselling. Shannon went on to take up a Counselling Contract with us for 2023.

We were able to take on two new graduated counsellors in the latter part of the year. Jess Dickson replaced much of the work that our previous counsellor Caitlin Wallace was doing with children and young adults. We are so thankful for Jess filling this gap. We were also grateful to have Hugh Eddy join the team to support an increasing demand from young men who were seeking counselling support.

The team have bonded well together and our monthly counselling meetings provide this place to share and grow in our professional development with speakers coming in to talk on topics.

Mana Ake

The Mana Ake service provides mental health-based supports to primary aged children across the Canterbury region. We are one of 12 agencies who contribute staff into a collective team of 57, fully funded by the CDHB.

We are proud to be able to support our tamariki to develop personal resilience, build healthy self esteem and develop positive social skills. Our team are focused on the Hornby and South West areas of Christchurch.

The Mana Ake contract has been extended for another four years. This gives agencies better opportunity for recruitment as we can now offer permanent contracts, as well as giving existing kaimahi job security.

Our Mana Ake kaimahi are often working with very challenging and sometimes reluctant families. With persistence and care from the kaimahi, most of these families are getting support and the chil-

dren and whānau are benefiting.

We have been able to offer the Tuning Into Kids parenting programme, which two of our kaimahi are now trained in and able to facilitate. This has been a really positive space and opportunity for collaboration at Gilberthorpe School.

Two of our Kaimahi have updated the I am Valued Group resources, which are now able to be used Mana Ake wide as whole class groups or smaller groups. This is a valuable resource provided by Te Whare Awhero.



Ingrid Daff
Mana Ake Team Leader

“ [Child] has seen school as a positive experience, less morning incidents and starting to use coping strategies. ”

“ [Regarding the parenting course] Noticing that other people/whānau have the same battles we do, brings hope that I’m not alone. ”



63,000

children, parents and teachers supported through Mana Ake since it launched in July 2018

110

children supported by our Mana Ake team this year



Children's needs this year included 35 for social skills support, 19 for emotional regulation, 8 coping with change, 4 with family harm, 3 with trauma and 1 with suicidal ideation



71

parent drop ins with our Mana Ake team this year

Horizons OSCAR

Our Horizons Oscar Before School, After School and Holiday programmes provide a space for children to play and learn in a safe and supportive environment. This social enterprise is funded through a mix of subsidised fees charged to families, and through our own fundraising. We currently provide this service to four lower decile schools in the Greater Hornby area.

One of our biggest highlights this year was the establishment of both the Gilberthorpe Oscar and our Opportunities Fund.

Through these two we were able to help a high school student who was struggling with the responsibility of getting her siblings to school and picking them up from school whilst being able to get to her own school on time, which started earlier than her siblings school. We have not had the ability to help in the past.

Another highlight was being able to work again with some amazing staff

who had to take a break from their roles because of the impacts of Covid.

It has also been great being approached in the street and when out shopping by young adults, saying hello and talking positively about the time when they had attended Oscar many years before. It's an amazing thing to know that we have left a positive, lasting impression on these young children.



Marie Robson
Horizons OSCAR Manager

“ **Lovely staff, always friendly, coming to classroom to collect the children is very reassuring.** ”

”





260

families
took part in
Horizons Oscar
this year

1262

before and after
school sessions held
this year across
four schools

\$108,404

in social impact for the
community through
provision of
Oscar services

23

children
supported this
year through the
Oscar Opportunity
Fund



Community

One of our core values at Te Whare Awhero is that we 'stand with our community' and our Community Development arm leads the way in this for us.

Whether it be welcoming new residents and helping them build new networks, saying yes to those who knock on our door asking for help, or collaborating with other community groups to meet the collective needs of our community, it all contributes toward our mission of bringing hope.



Nikki Ewing
Community Support Worker

“ [Welcome packs are] really quite nice. I’ve lived all over Christchurch and I don’t know of any other communities that do this. ”

“ Amazing service thank you guys for helping me out when my son and I had covid a while back. It was much appreciated. ”

Gilberthorpe Project

2022 was the beginning of the Gilberthorpe Project, starting with Drama Club, and slowly growing the number of activities offered over the year to support children and caregivers.

Activities already launched this year include Taiaha classes, Epic Sports programmes, parenting classes and counselling offered in school, with more in the works. Seeing the children’s engagement and confidence grow has been very encouraging.

288 meaningful community contacts in 2022.

These included 36 welcome packs given out, 19 clients needing Family Support, 7 for Housing support, 6 for Social Support, and 5 for Food.

Community Support

In 2022 we gained a new Community Support worker, who has worked hard to make connections between agencies in the area, with a focus on reciprocal support.

A significant focus in 2022 was to promote Te Whare Awhero in the community which has resulted in the agency being recognised in the community as a place to go for support.

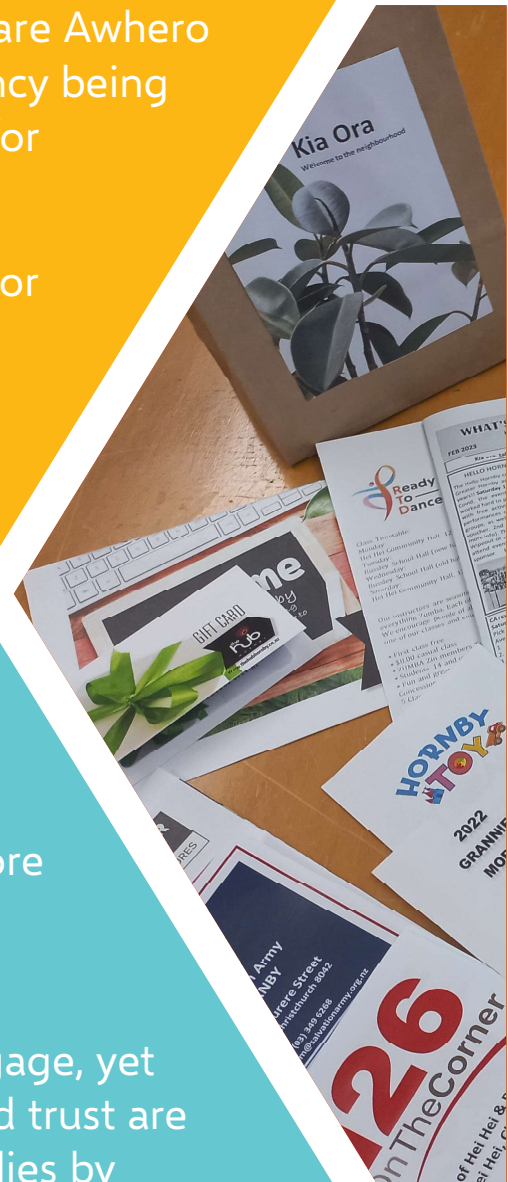
We also collaborated with other agencies for the 0800 HORNBY phone line, changing focus from Covid support to General Support.

Longitudinal Whānau Support

In 2022 we progressed from community research to a pilot programme, and our core worker has spent several months working closely with 3 families.

One of our families took 2 months to initially engage, yet is becoming more and more connected as time and trust are built. We have been able to support one of the families by completing a gardening bee morning at their house to make the garden more manageable.

The biggest highlight, as the core worker, was when I sent a Te Reo course link to a parent who wanted to reconnect with her Maori culture. Within days she had signed up and was so excited about attending. This year she has started the course and is loving it.



Te Whare Awhero

bringing hope to our community



Hornby High's senior boys basketball team qualified for nationals this year - but couldn't afford to get there. We helped raise the funds to get the team to Palmy, where they placed 8th in New Zealand.



Through our food drive in partnership with Hope Presbyterian Church we collected dozens of bags of food and period products for the Salvation Army to distribute to those in need



Through a Lego set donation drive, we collected dozens of sets for Gilberthorpe School, where they are a great tool to help motivate students or provide quiet time for students who are overwhelmed



As we piloted the Longitudinal Whanau Support project this year we worked to involve the community at every step. That included a survey of 80 children about activities that would inspire them.



Financial Overview

Overall, Te Whare Awhero had a year of growth in all departments, an increase in services provided and further outreach in our community.

We saw an 65% increase in grants and donations over the year from external funders which helped us provide more services at reduced prices. This helped us grow our Counselling Support Fund by 36% and increase the subsidised sessions we were able to provide.

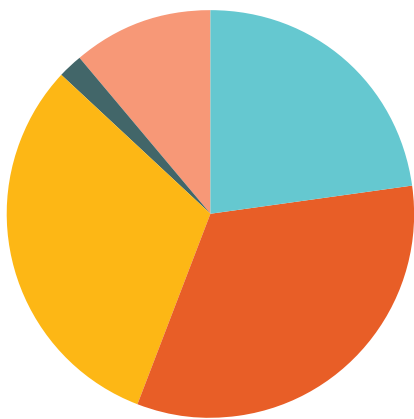
Our OSCAR programmes saw an increase in funding by 17% for the year

helping us to reduce the cost of this service to low-income families. The opening of a fourth centre at Gilberthorpe Primary School has allowed us to expand our reach in the community.

Our expenses grew by 8.6% during the last year. This was driven by our new Longitudinal Whanau Support Programme as well as increased costs in overheads driven by inflation.

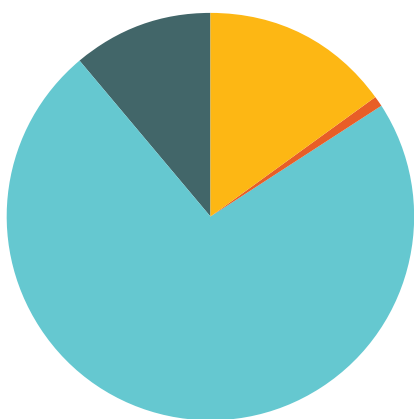


Jo-Anne Gillies
Finance Manager



2022 Income

| | 2022 | 2021 |
|-----------------------------|--------------------|--------------------|
| Counselling | \$141,997 | \$165,554 |
| OSCAR | \$425,787 | \$392,435 |
| Mana Ake | \$406,855 | \$461,530 |
| Community | \$22,841 | \$0 |
| Grants and Donations | \$301,165 | \$181,515 |
| Other | \$3,679 | \$49,771 |
| Total | \$1,302,326 | \$1,250,804 |



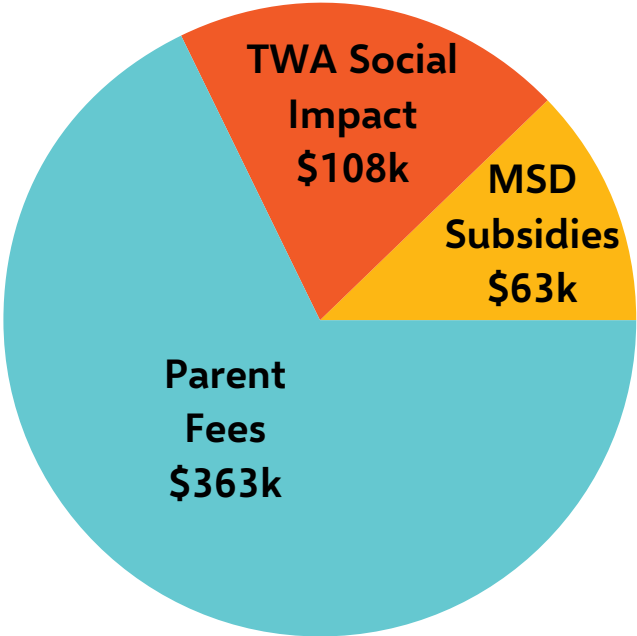
2022 Expenses

| | 2022 | 2021 |
|---------------------------|--------------------|--------------------|
| Programme costs | \$199,106 | \$217,065 |
| Staff Expenses | \$12,885 | \$6,257 |
| Salaries and Wages | \$990,977 | \$867,293 |
| Overheads | \$153,067 | \$140,905 |
| Other | \$760 | \$17,450 |
| Total | \$1,356,795 | \$1,248,969 |

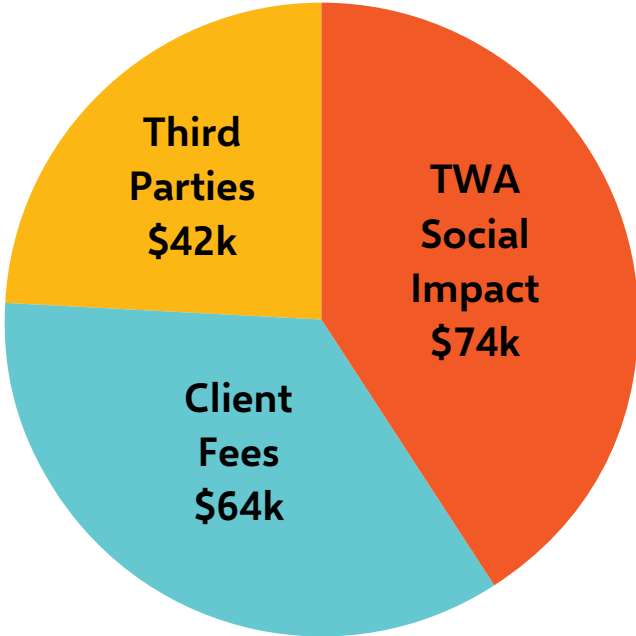
Social Impact

Our social impact figures reflect the cost of the services we provide to the community, less the amount the community pays back through fees or subsidies. That gives us our social impact - the value we gift to our community.

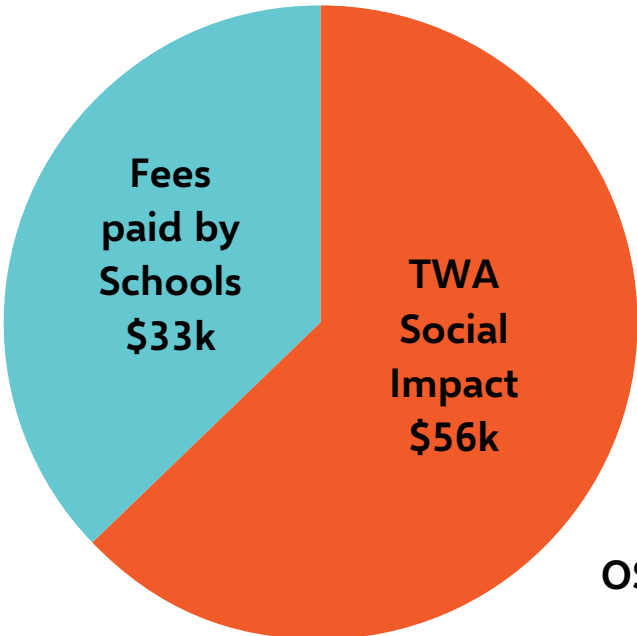
Horizons OSCAR \$534,191 total operating cost



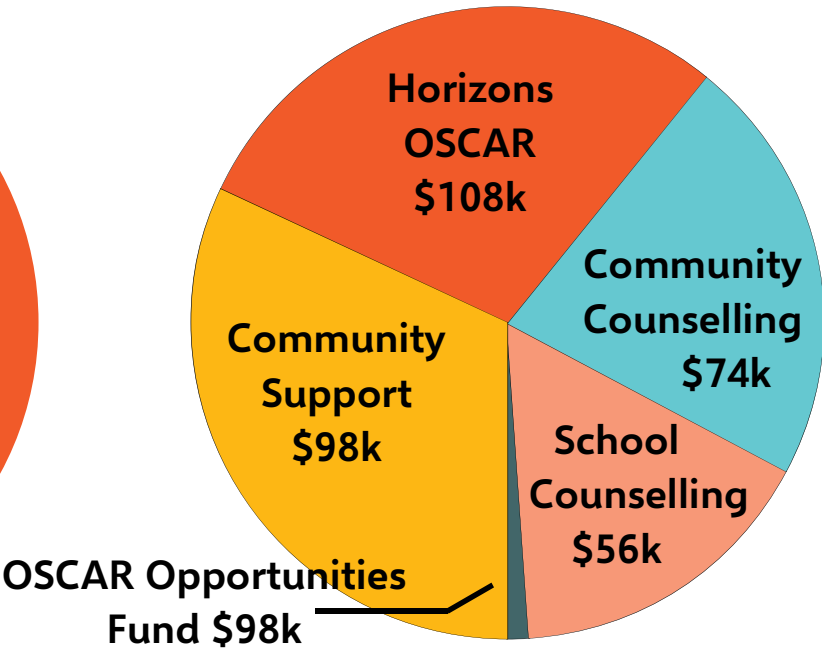
Community Counselling \$179,668 total value of sessions



School-based Counselling \$88,680 total value of sessions



Total Social Impact \$341,445 contribution over 2022



Director's Report

Through the last year we asked the question: Where to next? Where do we go to advance our mission of bringing hope to our community, and to those in need?

This year's staff day was themed 2023: The year that Carey learnt how to spell launch, no easy thing for a dyslectic I can tell you! But throughout the last year we have been developing a number of new projects that we now plan to launch in the year to come.

A big project for us has been the development of the Longitudinal Whanau Support proposal. This is a new project for us which is focused on supporting the children of the most isolated whanau living in the Hei Hei/ Broomfield communities. Our goal is to expand their horizons and realize the potential of the children living in these communities.

Throughout 2022 we piloted different aspects of this project through a partnership with Gilberthorpe School, working directly with a few whanau, and talking with many people living and working in this community, to build the project from the ground up. We are really excited about the po-

tential within this project and are now moving into a phase of seeking funding, which will enable us to put the first stage into action. To learn more about this project head to www.tewhareawhero.org/publications to find the full proposal.

To help support this project and the other work of the trust we have also been developing a small business sponsorship programme built under the brand of being either a 'Hope Champion' or 'Hornby Champion'. This allows business in the local area to be able to directly support local families through supporting us to provide low-cost counselling, in school supports and direct support of the most at risk children of the most isolated whanau. To learn more head to www.hope-champion.org.nz

Finally, we are working with our local NGO partners to transition the 0800 COVID support line developed in 2022 to being a wider social support phone





line in which anyone can use to seek help or support.

Through this year we will be seeking to identify possible social enterprise opportunities which can help us to create new long term funding streams while also supporting the local community

Outside of this we continue to be the very best community development trust we can be, available and responsive to the needs of the local community we live and work in, continuing to bring Hope wherever it is needed.

Flying kites and praying for wind.



Carey Ewing
Director

Acknowledgments

We want to offer a big thank you to our supporters and partners who share our mission of bringing hope. Your support makes a significant difference for us, allowing us to support those in need in our community. Thank you!

ANZ Staff Foundation
Blogg Charitable Trust
Christchurch Adventist School
Christchurch Airport Community Fund
Christchurch City Council
Citizens Advice Bureau Hornby
COGS
Corcoran French Lawyers
Doner - Alison Ford
Dovedale Reformed Church
Foodstuffs
Gilberthorpe School
Greater Hornby Residents' Association
Hope Presbyterian Church
Hornby Community Centre
Hornby High School
Hornby Rotary
Ilam Baptist Church
Isleworth School
John Illot Charitable Trust
Keith Laugensen Charitable Trust
Mana Ake
Maurice Carter Charitable Trust

Ministry of Social Development
Rata Foundation
Redeemer Church
Riccarton Community Church
Right Service Right Time
Rolleston School
Roy Owen Dixey Charitable Trust
 managed by Public Trust
Salvation Army Hornby
South Hornby School
Sport Canterbury
St Bernadette's School
SWP Commercial
The David Ellison Charitable Trust
 managed by Public Trust
The Presbyterian Church
Upstream NZ
Vision College
Wairakei School
West Church
Wigram Primary School
Workplace Support
126 On The Corner

How can you help?

Get involved and support our work

Use our counselling services

If you or a friend needs a counsellor and can afford to pay the standard full price of \$120.00 per session, that allows us to provide sessions to others in need at discounted prices.

Try our Oscar programmes for your children

Our Horizons Oscar before school, after school and holiday programmes are held at schools across Greater Hornby. The more children use the services, the more schools we will be able to expand into, and the more children we can support. For more information, visit www.horizonsoscar.net.nz

Become a Hornby Champion

Support our work in the community by committing to a monthly sponsorship, personally or through a business. Your contribution will support us to bring hope to the Greater Hornby community, as well as supporting our long-term family support model for struggling families.

Nominate us on Upstream

If you're looking for a new service or supplier of anything, from cleaning to construction to commercial supplies, search first on www.upstream.co.nz. When you make a purchase from an Upstream supplier, the supplier donates part of their invoice to a Good Cause organisation you nominate. You can support us this way as a customer, or if you own a business you could sign up as a supplier.

Follow us on Facebook

Follow us on Facebook, search for Te Whare Awhero. As well as updates on our work, we post about volunteer opportunities that arise and ways to help when we see specific needs in the community.



TE WHARE AWHERO
Hope House

If you are in need of support or looking for hope, we are here to help.

Drop in to our office opposite The Hub Hornby, or call us anytime.

03 967 4673

admin@hpct.org.nz

www.tewhareawhero.org

[facebook/tewhareawhero](https://www.facebook.com/tewhareawhero)

1/413 Main South Rd, Hornby

PO BOX 16451, Hornby 8441